

VFD-E/EL Series

Features

▶ **Compact Design**

Space saving and easy DIN rail mounting with optional DIN rail adapter (Built in Frame B)

▶ **Built-in EMC Filter (230V 1-phase and 460V 3-phase)**

Reduces electromagnetic interference efficiently

▶ **Flexible Extension (VFD-E Series Only)**

Via optional cards, such as I/O card, Relay card, PG (Encoder) card and USB card, to meet your application requirements



▶ **RFI Switch for IT Mains**

Removable "Y" capacitor to use with IT mains supplies

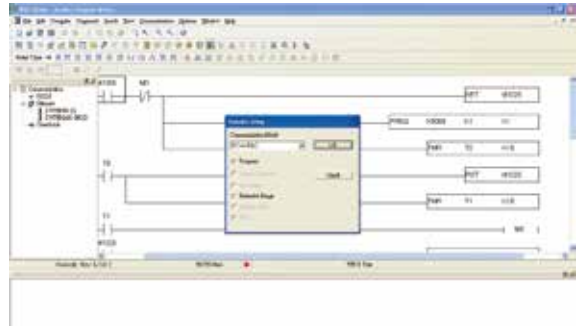


▶ **Standard MODBUS Protocol**

Standard MODBUS Protocol via RS-485

▶ **Built-in PLC Function (VFD-E Series Only)**

PLC programming and editing capability without the need of a PLC



▶ **Side-by-side Installation (40°C)**

High-efficiency cooling and flexible spacing



Accessories

▶ **Fieldbus Modules**



- Profibus
- DeviceNet
- CANopen

▶ **Others**



- Digital keypad
- Keypad for communication (VFD-PU06)
- Grounding plate



- Brake resistor
- Brake unit
- DIN rail (Width 35mm)

Contact Details:

Industrial Supply Syndicate
54, Ezra Street, Kolkata - 700 001, INDIA
Phone: 22350923, 22356676 Fax: +91 33 3022 2923
Email: info@industrialindia.com Website: www.industrialindia.com

Accessories

▶ Optional Cards (VFD-E Series Only)



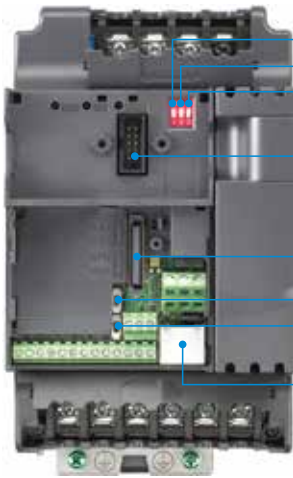
■ **EME-PG01**
PG card

- **EME-R3AA**
Relay card (3 form A / NO contacts)
- **EME-R2CA**
Relay card (2 form C / Change-over contacts)
- **EME-33A**
I/O card (photocoupler 3in + 3out)

- **EME-A22A**
Analog I/O Card (12 bits)
- **CME-USB01**
Second communication card (USB1.1)

External Parts

▶ VFD-E Series



- Switch to ON for 50Hz
- Switch to ON for free run to stop
- Switch to ON for setting frequency source to ACI (Pr. 02.00=2)
- Keypad mounting port
- Mounting port for extension card
- ACI terminal ACI/AVI2 switch
- NPN/PNP
- RS-485 port (RJ45)

▶ VFD-EL Series



- Digital keypad
- NPN/PNP
- ACI/AVI
- External terminals
- RS-485 port (RJ45)

Standard Models

▶ Power Range

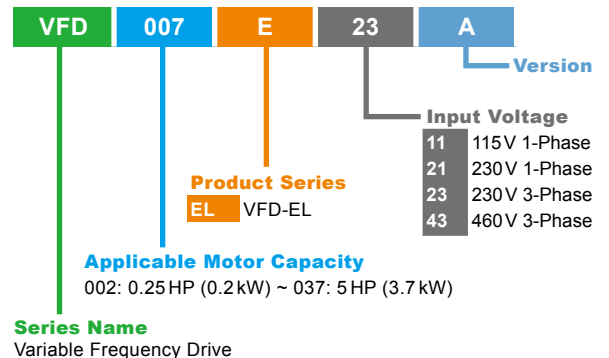
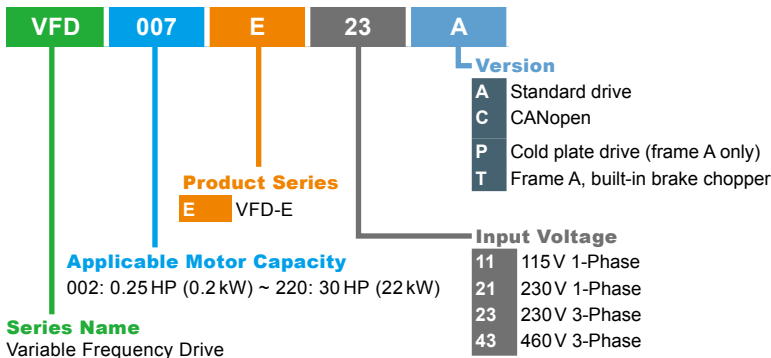
VFD-E Series:

- 1-phase 115V series: 0.2~0.75kW (0.25~1 hp)
- 1-phase 230V series: 0.2~2.2kW (0.25~3 hp)
- 3-phase 230V series: 0.2~7.5kW (0.25~20 hp)
- 3-phase 460V series: 0.4~22 kW (0.50~30 hp)

VFD-EL Series:

- 1-phase 115V series: 0.2~0.75kW (0.25~1 hp)
- 1-phase 230V series: 0.2~2.2kW (0.25~3 hp)
- 3-phase 230V series: 0.2~3.7 kW (0.25~5 hp)
- 3-phase 460V series: 0.4~3.7 kW (0.50~5 hp)

Model Name



Contact Details:

Industrial Supply Syndicate
54, Ezra Street, Kolkata - 700 001, INDIA
Phone: 22350923, 22356676 Fax: +91 33 3022 2923
Email: info@industrialindia.com Website: www.industrialindia.com

